

Overview

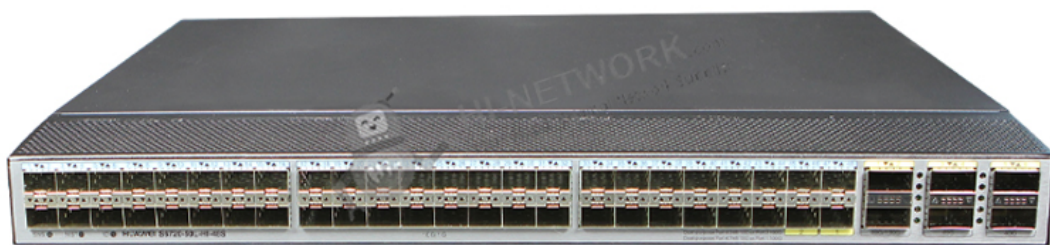
The S6700 series Ethernet switches are next-generation 10G fixed switches. The S6700 can function as an access switch in an Internet data center (IDC) or a core switch on a campus network. The S6700 has industry-leading performance and provides line-speed 10GE access ports and line-speed 40GE even 100GE uplink ports. It can be used in a data center to provide 10 Gbit/s access to servers or function as a core switch on a campus network to provide 40 Gbit/s even 100 Gbit/s traffic aggregation. In addition, the S6700 provides a wide variety of services, comprehensive security policies, and various QoS features to help customers build scalable, manageable, reliable, and secure data centers.

Quick Specification

Table 1 shows the quick specification.

Model	S6720-54C-EI-48S-AC
Part Number	02350DMP
First supported version	V200R008C00
Description	S6720-54C-EI-48S Bundle (48 10 Gig SFP+, 2 40 Gig QSFP+ interface, with 1 interface slot, with 600W AC power supply)
Memory	2 GB
Flash memory	512 MB in total. To view the available flash memory size, run the display version command.
Typical power consumption	190 W
Typical heat dissipation	648.3 BTU/hour

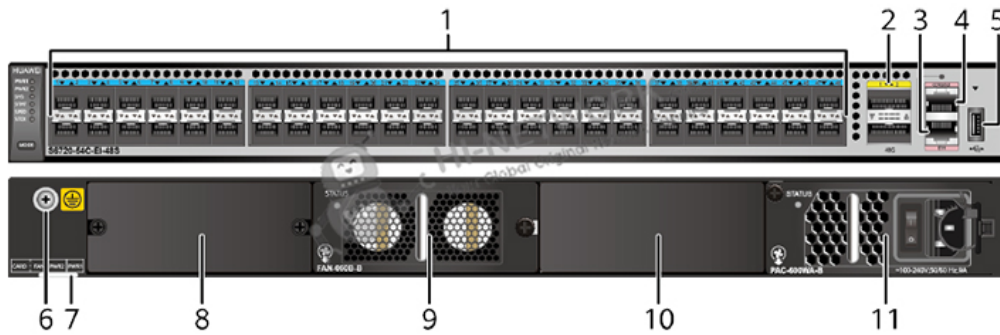
Figure 1 shows the appearance of S6720-54C-EI-48S-AC.





Product Details

Figure 2 shows the structure of S6720-54C-EI-48S-AC.



Note:

(1)	Forty-eight 10GE SFP+ ports	(7)	ESN label
(2)	Two 40GE QSFP+ ports	(8)	Rear card slot
(3)	One ETH management port	(9)	Fan slot
(4)	One console port	(10)	Power module slot 2
(5)	One USB port	(11)	Power module slot 1
(6)	Ground screw		

Get More Information

Do you have any question about the S6720-54C-EI-48S-AC (02350DMP)?

Contact us now via info@hi-network.com.

Specification

S6720-54C-EI-48S-AC Datasheet	
Model	S6720-54C-EI-48S-AC
Part Number	02350DMP
Description	S6720-54C-EI-48S Bundle (48 10 Gig SFP+, 2 40 Gig QSFP+ interface, with 1 interface slot, with 600W AC power supply)
Dimensions without packaging (H x W x D) [mm(in.)]	Basic dimensions (excluding the parts protruding from the body): 44.4 mm x 442.0 mm x 424.7 mm (1.75 in. x 17.40 in. x 16.72 in.)





	Maximum dimensions (the depth is the distance from ports on the front panel to the parts protruding from the rear panel): 44.4 mm x 442.0 mm x 451.8 mm (1.75 in. x 17.40 in. x 17.79 in.)
Dimensions with packaging (H x W x D) [mm(in.)]	175.0 mm x 710.0 mm x 550.0 mm (6.89 in. x 27.95 in. x 21.65 in.)
Chassis height [U]	1
Chassis material	Metal
Weight with packaging [kg(lb)]	10.2
Typical power consumption [W]	190
Typical heat dissipation [BTU/hour]	648.3
Maximum power consumption [W]	296.1
Maximum heat dissipation [BTU/hour]	1010.32
Static power consumption [W]	-
MTBF [years]	79.39
MTTR [hours]	2
Availability	> 0.99999
Noise at normal temperature (acoustic power) [dB(A)]	72.1
Noise at normal temperature (acoustic pressure) [dB(A)]	59.3
Number of card slots	1
Number of power slots	2
Number of fans modules	1
Redundant power supply	1+1 Pluggable AC and DC power modules can be used together in the same switch.
Long-term operating temperature [°C(°F)]	0°C to 45°C (32°F to 113°F) at an altitude of 0-1800 m (0-5906 ft.)
Restriction on the operating temperature variation rate [°C(°F)]	When the altitude is 1800-5000 m (5906-16404 ft.), the highest operating temperature reduces by 1°C (1.8°F) every time the altitude increases by 220 m (722 ft.).
Storage temperature [°C(°F)]	-40°C to +70°C (-40°F to +158°F)
Long-term operating relative humidity [RH]	5% to 95%, noncondensing
Long-term operating altitude [m(ft.)]	0-5000 m (0-16404 ft.)
Storage altitude [m(ft.)]	0-5000 m (0-16404 ft.)
Power supply mode	Pluggable power supply
Rated input voltage [V]	- AC input: 100 V AC to 240 V AC; 50/60 Hz - DC input: -48 V DC to -60 V DC
Input voltage range [V]	- AC input: 90 V AC to 264 V AC; 47 Hz to 63 Hz - DC input: -38.4 V DC to -72 V DC
Maximum input current [A]	The current specifications depend on the pluggable power modules in use. For details, see the related power module specifications.





Memory	2 GB
Flash memory	512 MB in total. To view the available flash memory size, run the display version command.
Console port	RJ45
Eth Management port	RJ45
USB	Supported
RTC	Supported
RPS input	Not supported
Service port surge protection [kV]	-
Power supply surge protection [kV]	±6 kV in differential mode, ±6 kV in common mode
Ingress protection level (dustproof/waterproof)	IP20
Types of fans	Pluggable
Heat dissipation mode	Heat dissipation with fan, intelligent fan speed adjustment
Airflow direction	Air intake from left, front and right, air exhaustion from behind
PoE	Not supported
Certification	EMC certification Safety certification Manufacturing certification

Want to Buy

[Get a Quote](#)[Learn More](#) about Hi-Network[Search](#) our Resource Library[Follow](#) us on LinkedInContact for [Sales or Support](#)

Contact HI-NETWORK.COM For Global Fast Shipping

HongKong Office Tel: +00852-66181601

HangZhou Office Tel: +0086-571-86729517

Email: info@hi-network.comSkype: [echo.hinetwork](https://www.skype.com/add?contact=echo.hinetwork)

WhatsApp Business: +8618057156223

