

Overview

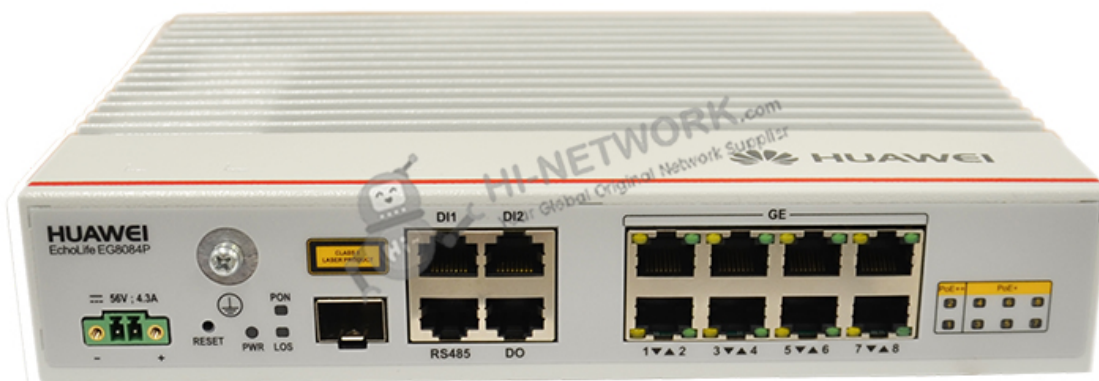
The Huawei EchoLife EG8084P is an industrial ONU used in Huawei's Agile POL Solution. The EG8084P utilizes GPON technology to provide ultra-broadband access for enterprise campuses. It provides one GPON or XG-PON or XGSPON port on the upstream, and also provides 8 GE ports to support PoE++ and PoE+ functions. The high-performance service forwarding capabilities to ensure excellent video surveillance quality for enterprise campuses and supports future-oriented services.

Quick Specification

Table 1 shows the Quick Specification.

Model	EchoLife EG8084P
Dimensions (L x W x H)	43.6 mm x 235 mm x 180 mm
Weight	About 1.9 kg
Operating Temperature	-40°C to 70°C
Operating Humidity	5% RH to 95% RH (non-condensing)
Power Adapter Input	100V to 240V AC, 50/60 Hz
Network-side Ports	1 x GPON/XG-PON/XGS-PON
User-side Ports	8 x GE
Indicators	PWR/PON/LOS/LAN/PoE+/PoE++
Maximum PoE Output Power	Gross power up to 210W, number 1 and 2 GE ports support up to 60W (PoE++) and number 3 to 8 GE ports support up to 30W (PoE+)

Figure 1 shows the appearance of EchoLife EG8084P.





Product Details

Port Parameters

GPON Port

- SC/UPC connector
- SFP+ optical module
- GPON: Class B+; Receiver sensitivity: -27dBm; Overload optical power: -8dBm
XG-PON: Class N1/N2a; Receiver sensitivity: -28dBm; Overload optical power: -8dBm
XGS-PON: Class N1/N2; Receiver sensitivity: -28dBm; Overload optical power: -9dBm
- Transmission rate (unit: Gbit/s)
GPON: downstream 2.488, upstream 1.244
XG-PON: downstream 9.953, upstream 2.488
XGS-PON: downstream 9.953, upstream 9.953
- Type B single-homing
- Type B dual-homing (supported in Layer 2 forwarding)

Ethernet Electrical Port

- PoE & PoE+ & PoE++, complying with IEEE 802.3af, IEEE 802.3at and IEEE 802.3bt(draft)
- RJ-45 connector
- Auto ports speed (10/100/1000 Mbit/s)

Ethernet Electrical Port (Continued)

- Auto-MDI/MDIX
- Configuration of the number of MAC addresses learned on an Ethernet port
- Ethernet port-based VLAN transparent transmission and filtering

Product Function

Automatic Service Provisioning

- Authentication exemption
- XML/OMCI/TR069

Smart O&M

- XML / Web UI
- eSight management
- Rogue ONT detection and self-regulation





- Ring network detection
- PPPoE / DHCP emulation testing

Layer 3 Features

- Default / Static / Policy / Service routes
- VLAN binding
- ALG/UPnP/ARP
- DDNS/DMZ/DNS/NAPT
- PPPoE/Static IP/DHCP
- Port mapping/Port trigger

Layer 2 Management

- DHCP Option82
- PTP
- BPDU transparent transmission
- LLDP/LLDP-MED

Multicast

- IGMP v2/v3 snooping
- Dynamic controllable multicast
- MLDv1/MLDv2 snooping

QoS

- Ethernet port rate limitation
- 802.1p priority
- SP/WRR/SP+WRR

Security

- Filtering based on MAC/IP/URL
- DoS/ARP anti-attacks
- Session number restriction
- Device access control
- Support four authentication methods for EAPMD5/TLS/TTLS/PEAP of 802.1x

Get More Information

Do you have any question about the EchoLife EG8084P (02232SVY)?

Contact us now via info@hi-network.com.





Specification

EchoLife EG8084P Specification	
Dimensions (L x W x H)	43.6 mm x 235 mm x 180 mm
Weight	About 1.9 kg
Operating Temperature	-40°C to 70°C
Operating Humidity	5% RH to 95% RH (non-condensing)
Power Adapter Input	100V to 240V AC, 50/60 Hz
System Power Supply	56V DC, 4.5A
Static Power Consumption	9W
Maximum Power Consumption	17W
NNI	1 x GPON/XG-PON/XGS-PON
UNI	8 x GE
Maximum PoE Output Power	Gross power up to 210W, number 1 and 2 GE ports support up to 60W (PoE++) and number 3 to 8 GE ports support up to 30W (PoE+)
Surge Protection Specifications	GE port: Common mode 6 kV; differential mode 1.5 kV AC power supply: Common mode 6 kV; differential mode 6 kV; different mode 3 kA of surge current
Optical Connector	SC/UPC
Indicators	PWR/PON/LOS/LAN/PoE+/PoE++
GPON Port	<ul style="list-style-type: none"> • SC/UPC connector • SFP+ optical module • GPON: Class B+; Receiver sensitivity: -27dBm; Overload optical power: -8dBm XG-PON: Class N1/N2a; Receiver sensitivity: -28dBm; Overload optical power: -8dBm XGS-PON: Class N1/N2; Receiver sensitivity: -28dBm; Overload optical power: -9dBm • Transmission rate (unit: Gbit/s) GPON: downstream 2.488, upstream 1.244 XG-PON: downstream 9.953, upstream 2.488 XGS-PON: downstream 9.953, upstream 9.953 • Type B single-homing • Type B dual-homing (supported in Layer 2 forwarding)
Ethernet Port	<ul style="list-style-type: none"> • PoE & PoE+ & PoE++, complying with IEEE 802.3af, IEEE 802.3at and IEEE 802.3bt(draft) • RJ-45 connector • Auto ports speed (10/100/1000 Mbit/s)
Installation Mode	Support rack and a network box mounting, on a DIN rail or vertically on the supporting plane





Want to Buy

[Get a Quote](#)

[Learn More](#) about Hi-Network



[Search](#) our Resource Library



[Follow](#) us on LinkedIn



Contact for [Sales or Support](#)

Contact HI-NETWORK.COM For Global Fast Shipping

HongKong Office Tel: +00852-66181601

HangZhou Office Tel: +0086-571-86729517

Email: info@hi-network.com

Skype: [echo.hinetwork](https://www.skype.com/people/echo.hinetwork)

WhatsApp Business: +8618057156223

