

Overview

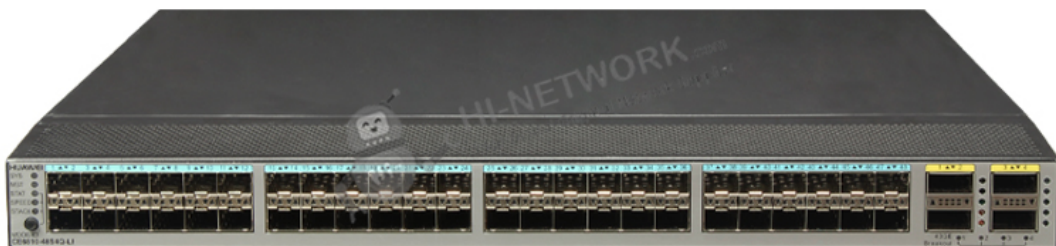
Offering high-performance, high port density, and low latency, CloudEngine 6800 series switches enable enterprises and carriers alike to build cloud-oriented data center networks. The series features an advanced hardware design combined with either 10 GE, 25 GE, or 50 GE access ports, and 40 GE, 100 GE, or 200 GE uplink ports. Advanced data center features, high-performance stacking technologies, and flexible airflow capabilities complete the series. CloudEngine 6800 is well-suited to both the core and aggregation layers, and is fully compatible with CloudEngine 16800 and 12800 series switches, enabling enterprises to build scalable, simplified, open, and secure networks.

Quick Specification

Table 1 shows the quick specification.

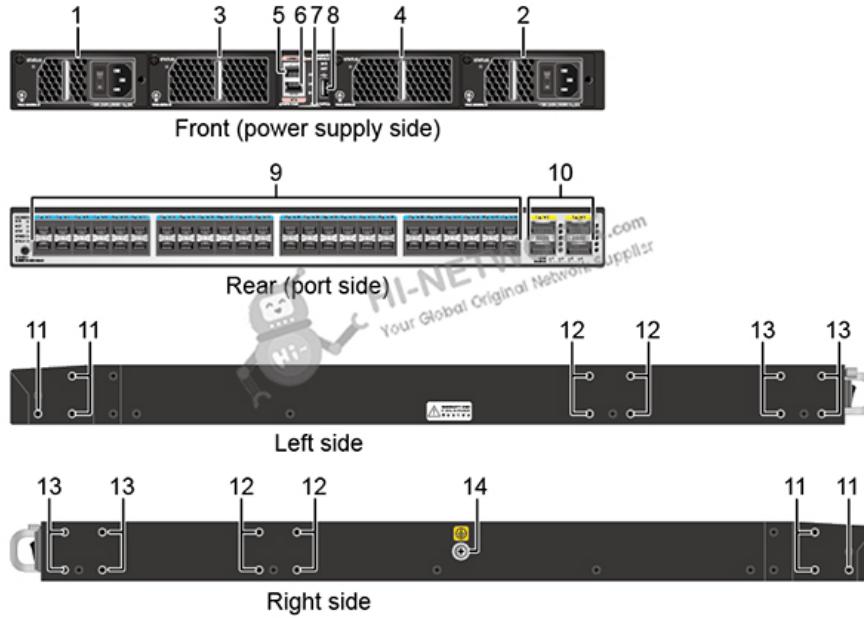
Model	CE6810-48S4Q-LI
Part Number	02350APY
Description	CE6810-48S4Q-LI Switch (48-Port 10GE SFP+, 4-Port 40GE QSFP+, Without Fan Box and Power Module)
Memory	2 GB
Flash memory	16 MB
Typical power consumption	101 W
Typical heat dissipation	344 BTU/hr

Figure 1 shows the appearance of CE6810-48S4Q-LI.



Product Details

Figure 2 shows the structure of CE6810-48S4Q-LI.



Note:

(1)	Power supply slot 1	(8)	USB port
(2)	Power supply slot 2	(9)	Forty-eight 10GE SFP+ Ethernet optical ports
(3)	Fan slot 1	(10)	Four 40GE QSFP+ Ethernet optical ports
(4)	Fan slot 2	(11)	Three port-side mounting holes for mounting brackets
(5)	Console port	(12)	Four middle mounting holes for mounting brackets
(6)	ETH management port (RJ45)	(13)	Four power-supply-side mounting holes for mounting brackets
(7)	Barcode label	(14)	Ground screw

Get More Information

Do you have any question about the CE6810-48S4Q-LI (02350APY)?

Contact us now via info@hi-network.com.

Specification

CE6810-48S4Q-LI Datasheet

CE6810-48S4Q-LI (02350APY)

Datasheet

[Get a Quote](#)


HI-NETWORK.com
Your Global Original Network Supplier

Model	CE6810-48S4Q-LI
Part Number	02350APY
Description	CE6810-48S4Q-LI Switch (48-Port 10GE SFP+, 4-Port 40GE QSFP+, Without Fan Box and Power Module)
Dimensions (W x D x H)	442.0 mm x 600.0 mm x 43.6 mm (17.4 in. x 23.6 in. x 1.72 in.)
Weight (with two power modules and two fan modules, calculated based on the heaviest model if multiple models are supported)	10.4 kg (22.93 lb)
Operating temperature	0°C to 40°C (32°F to 104°F) at altitude of 0-1800 m (0-5906 ft.) NOTE: When the altitude is 1800-5000 m (5096-16404 ft.), the highest operating temperature reduces by 1°C (1.8°F) every time the altitude increases by 220 m (722 ft.).
Storage temperature	-40°C to +70°C (-40°F to +158°F)
Relative humidity	5% RH to 95% RH, noncondensing
Altitude	< 5000 m (16404 ft.)
Noise (sound pressure, 27°C)	Back-to-front airflow: < 51 dBA Front-to-back airflow: < 48 dBA
Power source type	AC/DC
AC power input	Rated input voltage range: 100 V AC to 240 V AC, 50/60 Hz Maximum input voltage range: 90 V AC to 290 V AC, 47 Hz to 63 Hz
DC power input	Rated voltage range: -48 V DC to -60 V DC Maximum voltage range: -38.4 V DC to -72 V DC
High-voltage DC power input	Not supported
Rated input current	350 W DC power (PDC-350WA series): 11 A (-48 V DC to -60 V DC) 600 W AC power (PAC-600WA series): 9 A (100 V AC to 240 V AC)
Maximum power consumption	238 W
Typical power consumption	101 W (100% throughput, SFP+ cables on 48 ports and QSFP+ cables on 4 ports, double power modules)
Maximum heat dissipation	812 BTU/hr
Typical heat dissipation	344 BTU/hr (100% throughput, SFP+ cables on 48 ports and QSFP+ cables on 4 ports, double power modules)
Power module	AC: 6 kV in common mode and 6 kV in differential mode DC: 4 kV in common mode and 2 kV in differential mode
Heat dissipation mode	Air cooling
Airflow	Front-to-back or back-to-front, depending on the fan modules and power modules
Power module backup	1+1 backup
Fan module backup	Not supported
Hot swap	Supported by all power modules and fan modules
Mean time between failures (MTBF)	49.33 years





Mean time to repair (MTTR)	1.74 hours
Availability	0.9999959688
Processor	1.2 GHz, quad-core
DRAM Memory	2 GB
NOR Flash	16 MB
NAND Flash	512 MB
Stack	Service port supporting the stack function 10GE optical ports and 40GE optical ports
Certification	Safety standards compliance EMC standards compliance Environmental standards compliance

Want to Buy

[Get a Quote](#)[Learn More](#) about Hi-Network[Search](#) our Resource Library[Follow](#) us on LinkedInContact for [Sales or Support](#)

Contact HI-NETWORK.COM For Global Fast Shipping

HongKong Office Tel: +00852-66181601

HangZhou Office Tel: +0086-571-86729517

Email: info@hi-network.com

Skype: echo.hinetwork

WhatsApp Business: +8618057156223

