

Overview

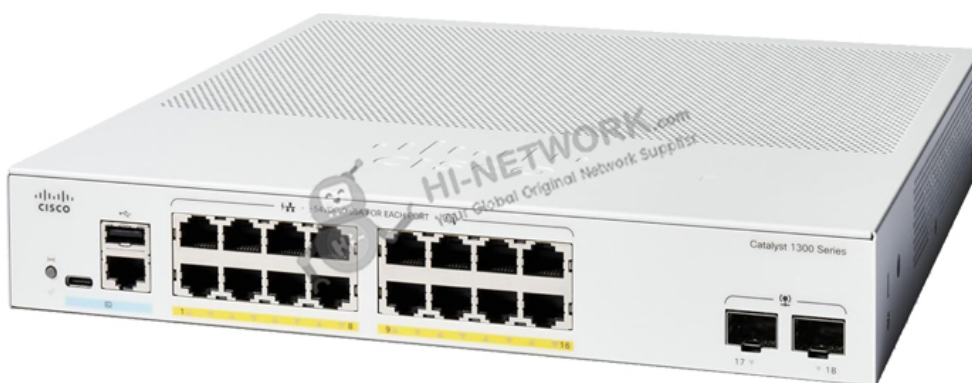
The Cisco C1300-16P-2G is a versatile and robust network switch designed to meet the growing needs of small to medium-sized businesses. With 16x 10/100/1000 PoE+ ports and a 120W power budget, it ensures efficient power delivery to connected devices. Additionally, it features 2x Gigabit SFP ports for high-speed uplink connections, providing enhanced flexibility and scalability for modern network environments.

Quick Specification

Table 1 shows the quick specification.

Model	C1300-16P-2G
Dimension	268 x 297 x 44 mm (10.56 x 11.69 x 1.73 in)
Weight	2.38 kg (5.25 lb)
Operating Temperature	23° to 122°F (-5° to 50°C)
Operating Humidity	10% to 90%, relative, noncondensing
Ports	16x 10/100/1000 PoE+ ports with 120W power budget
Combo Ports	2x Gigabit SFP
Form Factor	Fixed Configuration

Figure 1 shows the appearance of C1300-16P-2G.





Product Details

Product Features

- 16x 10/100/1000 PoE+ ports providing up to 30W per port.
- 120W total PoE power budget for efficient power distribution.
- 2x Gigabit SFP uplink ports for high-speed connectivity.
- Advanced security features for enhanced network protection.
- Energy-efficient design for reduced operational costs.

Product Applications

- High-density 48-port configuration for extensive connectivity.
- Advanced security features for network protection.
- Energy-efficient design for reducing operational costs.
- Quality of Service (QoS) for optimized traffic management.
- Scalable architecture for future growth.

Supported Options

Accessory	Model
SFP Transceiver Module	GLC-SX-MMD
Patch Cable	CAB-SFP-50CM
Rack Mount Kit	RCKMNT-1RU-2K

Compare to Similar Items

Model	Differences
Cisco C1300-24T-4G	24 ports instead of 48, same uplink options
Cisco C1200-48T-2X	2x 10G uplinks instead of 4x Gigabit
Cisco SG350-52	Same port count, lacks advanced security features





Get More Information

Do you have any questions about the C1300-16P-2G?

Contact us now via info@hi-network.com.

Specification

C1300-16P-2G Datasheet	
Ports	16x 10/100/1000 PoE+ ports with 120W power budget
Combo Ports	2x Gigabit SFP
Mounting	Rack-mountable
Forwarding Rate	26.78 Mpps
Switching Capacity	36.0 Gbps
Power	100-240V 50-60 Hz, internal, universal
Dimension	268 x 297 x 44 mm (10.56 x 11.69 x 1.73 in)
Weight	2.38 kg (5.25 lb)
Operating Temperature	23° to 122°F (-5° to 50°C)
Operating Humidity	10% to 90%, relative, noncondensing
Console port	Cisco standard RJ-45 console port and USB Type C port
USB port	USB Type C port on the front panel of the switch for easy file and image management as well as console port
Buttons	Reset button
Cabling type	Unshielded Twisted Pair (UTP) Category 5e or better for 1000BASE-T
LEDs	System, Link/Act, PoE, Speed
Flash	512 MB
CPU	ARM dual-core at 1.4 GHz
DRAM	1 GB DDR4
Certifications	UL (UL 62368), CSA (CSA 22.2), CE mark, FCC Part 15 (CFR 47) Class A





Want to Buy

Get a Quote



[Learn More](#) about Hi-Network



[Search](#) our Resource Library



[Follow](#) us on LinkedIn



Contact for [Sales or Support](#)

Contact HI-NETWORK.COM For Global Fast Shipping

HongKong Office Tel: +00852-66181601

HangZhou Office Tel: +0086-571-86729517

Email: info@hi-network.com

Skype: echo.hinetwork

WhatsApp Business: +8618057156223

