

Overview

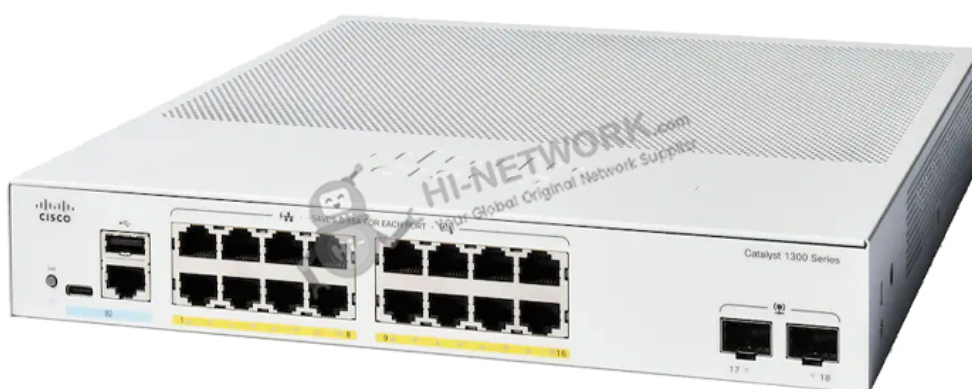
The Cisco C1300-16FP-2G is a robust and efficient network switch designed to elevate your network infrastructure. With 16x 10/100/1000 PoE+ ports offering a 240W power budget, and 2x Gigabit SFP uplink ports, this switch ensures seamless connectivity and power delivery for a variety of network devices. Ideal for small to medium-sized businesses, the Cisco C1300-16FP-2G delivers high-performance networking capabilities, making it a versatile addition to your network ecosystem.

Quick Specification

Table 1 shows the quick specification.

Model	C1300-16FP-2G
Dimension	268 x 323.3 x 43.94 mm (10.56 x 12.72 x 1.73 in)
Weight	2.49 kg (5.49 lb)
Operating Temperature	23° to 122°F (-5° to 50°C)
Operating Humidity	10% to 90%, relative, noncondensing
Ports	16x 10/100/1000 PoE+ ports with 240W power budget
Combo Ports	2x Gigabit SFP
Form Factor	Fixed Configuration

Figure 1 shows the appearance of C1300-16FP-2G.





Product Details

Product Features

- 16x PoE+ ports with a combined 240W power budget, ideal for power-hungry devices.
- 2x Gigabit SFP uplink ports for high-speed and reliable uplink connectivity.
- Advanced security features including port security, DHCP snooping, and IP source guard.
- Energy-efficient architecture minimizes power consumption without compromising performance.
- Compact design suitable for space-constrained environments.

Product Applications

- Ideal for small to medium-sized businesses needing a scalable and reliable network solution.
- Perfect for powering IP cameras, VoIP phones, and other PoE-enabled devices in an office environment.
- Suitable for educational institutions requiring a robust and secure networking solution.

Supported Options

Accessory	Model
SFP Transceiver Module	GLC-SX-MMD
Rack Mount Kit	RCKMNT-1RU
Power Cable	CAB-9K10A-EU

Compare to Similar Items

Model	PoE+ Ports	Power Budget	Uplink Ports	Layer	Form Factor
Cisco C1300-16FP-2G	16	240W	2x Gigabit SFP	Layer 2	1U Rackmount
Cisco C1000-8P-E-2G-L	8	120W	2x Gigabit SFP	Layer 2	Desktop
Cisco C1100-24P-4X	24	370W	4x 10G SFP+	Layer 3	1U Rackmount

Get More Information

Do you have any questions about the C1300-16FP-2G?

Contact us now via info@hi-network.com.





Specification

C1300-16FP-2G Datasheet	
Ports	16x 10/100/1000 PoE+ ports with 240W power budget
Combo Ports	2x Gigabit SFP
Mounting	Rack-mountable
Forwarding Rate	26.78 Mpps
Switching Capacity	36.0 Gbps
Power	100-240V 50-60 Hz, internal, universal
PoE	Supported
Dimension	268 x 323.3 x 43.94 mm (10.56 x 12.72 x 1.73 in)
Weight	2.49 kg (5.49 lb)
Operating Temperature	23° to 122°F (-5° to 50°C)
Operating Humidity	10% to 90%, relative, noncondensing
Console port	Cisco standard RJ-45 console port and USB Type C port
USB port	USB Type C port on the front panel of the switch for easy file and image management as well as console port
Buttons	Reset button
Cabling type	Unshielded Twisted Pair (UTP) Category 5e or better for 1000BASE-T
LEDs	System, Link/Act, PoE, Speed
Flash	512 MB
CPU	ARM dual-core at 1.4 GHz
DRAM	1 GB DDR4
Certifications	UL (UL 62368), CSA (CSA 22.2), CE mark, FCC Part 15 (CFR 47) Class A

Want to Buy

Get a Quote

[Learn More](#) about Hi-Network[Search](#) our Resource Library[Follow](#) us on LinkedInContact for [Sales or Support](#)



Contact HI-NETWORK.COM For Global Fast Shipping

HongKong Office Tel: +00852-66181601

HangZhou Office Tel: +0086-571-86729517

Email: info@hi-network.com

Skype: [echo.hinetwork](https://www.skype.com/people/echo.hinetwork)

WhatsApp Business: +8618057156223

