

Get a Quote

## Overview

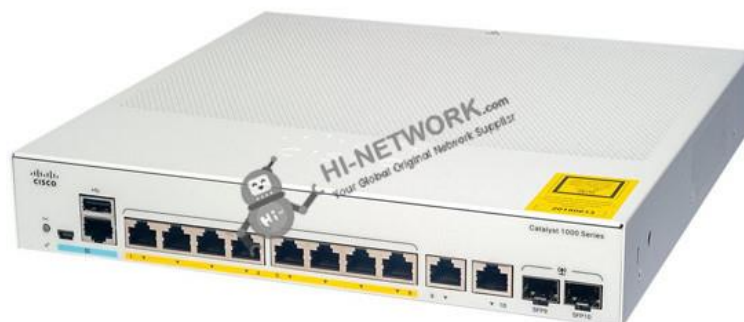
Cisco® Catalyst® 1000 Series Switches are fixed managed Gigabit Ethernet enterprise-class Layer 2 switches designed for small businesses and branch offices. These are simple, flexible and secure switches ideal for out-of-the-wiring-closet and critical Internet of Things (IoT) deployments. Cisco® Catalyst® 1000 operate on Cisco IOS® Software and support simple device management and network management via a Command-Line Interface (CLI) as well as an on-box web UI. These switches deliver enhanced network security, network reliability, and operational efficiency for small organizations.

## Quick Specification

Product Code	C1000-8P-2G-L
Description	8x 10/100/1000 Ethernet PoE+ ports and 67W PoE budget, 2x 1G SFP and RJ-45 combo uplinks
Gigabit Ethernet ports	8
Uplink interfaces	2 SFP/ RJ-45 combo
PoE+power budget	67W
Fanless	Y
Dimensions (WxDxH in inches)	10.56 x 12.73 x 1.73
CPU	ARM v7 800 MHz
DRAM	512 MB
Flash memory	256 MB
Forwarding bandwidth	10 Gbps
Switching bandwidth	20 Gbps
Forwarding rate(64—byte L3 packets)	14.88 Mpps

## Product Details:

### The Front Panel:



### The Cisco Catalyst 1000 Series Switches provides these features:

- \* 8, 16, 24, or 48 Gigabit Ethernet data or PoE+ ports with line-rate forwarding
- \* 2 or 4 fixed 1 Gigabit Ethernet Small Form-Factor Pluggable (SFP)/RJ 45 Combo uplinks or 4 fixed 0 Gigabit Ethernet Enhanced SFP (SFP+) uplinks
- \* Perpetual PoE+ support with a power budget of up to 740W
- \* CLI and/or intuitive web UI manageability options
- \* Network monitoring through sampled flow (sFlow)
- \* Security with 802.1X support for connected devices, Switched Port Analyzer (SPAN), and Bridge Protocol Data Unit (BPDU) Guard
- \* Compact fanless models available with a depth of less than 13 inches (33 cm)
- \* Device management support with over-the-air access via Bluetooth, Simple Network Management Protocol (SNMP), RJ-45, or USB console access
- \* Reliability with a higher Mean Time Between Failures (MTBF) and an enhanced limited lifetime warranty support(E-LLW)

### Compare to Similar Items

Product Code	C1000-8FP-2G-L	C1000-8FP-E-2G-L	C1000-8P-2G-L	C1000-8P-E-2G-L	C1000-8T-2G-L	C1000-8T-E-2G-L
Description	8x 10/100/1000 Ethernet PoE+ ports and 120W PoE budget, 2x 1G SFP and RJ-45 combo uplinks	8x 10/100/1000 Ethernet PoE+ ports and 120W PoE budget, 2x 1G SFP and RJ-45 combo uplinks, with external PS	8x 10/100/1000 Ethernet PoE+ ports and 67W PoE budget, 2x 1G SFP and RJ-45 combo uplinks	8x 10/100/1000 Ethernet PoE+ ports and 67W PoE budget, 2x 1G SFP and RJ-45 combo uplinks, with external PS	8x 10/100/1000 Ethernet ports, 2x 1G SFP and RJ-45 combo uplinks	8x 10/100/1000 Ethernet ports, 2x 1G SFP and RJ-45 combo uplinks, with external PS
Gigabit Ethernet ports	8	8	8	8	8	8

# C1000-8P-2G-L Datasheet



**HI-NETWORK.com**  
Your Global Original Network Supplier

Uplink interfaces	2 SFP/ RJ-45 combo	2 SFP/ RJ-45 combo	2 SFP/ RJ-45 combo	2 SFP/ RJ-45 combo	2 SFP/ RJ-45 combo	2 SFP/ RJ-45 combo
PoE+power budget	120W	120W	67W	67W	\	\
Fanless	Y	Y	Y	Y	Y	Y
Dimensions (WxDxH in inches)	10.56 x 12.73 x 1.73	10.56 x 7.28 x 1.73	10.56 x 12.73 x 1.73	10.56 x 7.28 x 1.73	10.56 x 7.28 x 1.73	10.56 x 7.28 x 1.73
CPU	ARM v7 800 MHz	ARM v7 800 MHz	ARM v7 800 MHz	ARM v7 800 MHz	ARM v7 800 MHz	ARM v7 800 MHz
DRAM	512 MB	512 MB	512 MB	512 MB	512 MB	512 MB
Flash memory	256 MB	256 MB	256 MB	256 MB	256 MB	256 MB
Forwarding bandwidth	10 Gbps	10 Gbps	10 Gbps	10 Gbps	10 Gbps	10 Gbps
Switching bandwidth	20 Gbps	20 Gbps	20 Gbps	20 Gbps	20 Gbps	20 Gbps
Forwarding rate(64—byte L3 packets)	14.88 Mpps	14.88 Mpps	14.88 Mpps	14.88 Mpps	14.88 Mpps	14.88 Mpps

Get more information:

Do you have any question about the C1000-8P-2G-L?

Contact us now via e-mail: [info@hi-network.com](mailto:info@hi-network.com)

## Specific Data Sheet:

Product Name	C1000-8P-2G-L
Description	8x 10/100/1000 Ethernet PoE+ ports and 67W PoE budget, 2x 1G SFP and RJ-45 combo uplinks
Gigabit Ethernet ports	8
Uplink interfaces	2 SFP/ RJ-45 combo
PoE+power budget	67W
Fanless	Y
Dimensions (WxDxH in inches)	10.56 x 12.73 x 1.73
Console ports	
RJ-45 Ethernet	1
USB mini-B	1
USB-A port for storage and Bluetooth console	1
Memory and processor	
CPU	ARM v7 800 MHz



# C1000-8P-2G-L Datasheet



**HI-NETWORK.com**  
Your Global Original Network Supplier

DRAM	512 MB
Flash memory	256 MB
Performance	
Forwarding bandwidth	10 Gbps
Switching bandwidth	20 Gbps
Forwarding rate(64—byte L3 packets)	14.88 Mpps
Unicast MAC addresses	16000
IPv4 unicast direct routes	542
IPv4 unicast indirect routes	256
IPv6 unicast direct routes	414
IPv6 unicast indirect routes	128
IPv4 static routes	16
IPv6 static routes	16
IPv4 multicast routes and IGMP groups	1024
IPv6 multicast groups	1024
IPv4/MAC security ACEs	600
IPv6 security ACEs	600
Maximum active VLANs	256
VLAN IDs available	4094
Maximum STP instances	64
Maximum SPAN sessions	4
MTU-L3 packet	9198 bytes
Jumbo Ethernet frame	10,240 bytes
Dying Gasp	Yes
MTBF in hours (data)	2,171,669
MTBF in hours (PoE)	1,786,412, 1,706,649 (External PS)
MTBF in hours (Full PoE)	1,706,649
Environmental	
Operating temperature Seal level	-5 to 50 deg C*
Up to 5,000ft (1500 m)	-5 to 45 deg C
Upto 10,000 (3000 m)	-5 to 40 deg C
Operating altitude	10,000 ft (3,000m)
Operating relative humidity	5% to 90% at 40C
Storage temperature	-13 to 158F (-25 to 70C)
Storage altitude	15,000 ft (4500m)



# C1000-8P-2G-L Datasheet



**HI-NETWORK.com**  
Your Global Original Network Supplier

Storage relative humidit	5% to 95% at 65C
<p>*Note: 50C operation is supported for short term operation only; GLC-BX-D/U and CWDM optics cannot support 50C operation; Minimum ambient temperature for cold start is at 0C (32F)</p>	
Safety and compliance	
Safety	UL 60950-1 Second Edition, CAN/CSA-C22.2 No. 60950-1 Second Edition, EN 60950-1 Second Edition, IEC 60950-1 Second Edition, AS/NZS 60950-1, IEC 62368-1, UL 62368-1 GB 4943.1-2011
EMC: Emissions	47CFR Part 15 Class A, AS/NZS CISPR32 Class A, CISPR32 Class A, EN55032 Class A, ICES-003 Class A, VCCI-CISPR32 Class A, EN61000-3-2, EN61000-3-3, KN32 Class A, CNS13438 Class A
EMC: Immunity	EN55024 (including EN 61000-4-5), EN300386, KN35
Environmental	Reduction of Hazardous Substances (RoHS) including Directive 2011/65/EU
Telco	Common Language Equipment Identifier (CLEI) code
U.S. government certifications	TBD
Connectors and interfaces	
Ethernet interfaces	<ul style="list-style-type: none"> <li>* 10BASE-T ports: RJ-45 connectors, 2-pair Category 3, 4, or 5 Unshielded Twisted Pair (UTP) cabling</li> <li>* 100BASE-TX ports: RJ-45 connectors, 2-pair Category 5 UTP cabling</li> <li>* 1000BASE-T ports: RJ-45 connectors, 4-pair Category 5 UTP cabling</li> <li>* 1000BASE-T SFP-based ports: RJ-45 connectors, 4-pair Category 5 UTP cabling</li> </ul>
Indicator LEDs	<ul style="list-style-type: none"> <li>* Per-port status: link integrity, disabled, activity</li> <li>* System status: system</li> </ul>
Console cables	<ul style="list-style-type: none"> <li>* CAB-CONSOLE-RJ45 Console cable 6 ft. with RJ-45</li> <li>* CAB-CONSOLE-USB Console cable 6 ft. with USB Type A and mini-B connectors</li> </ul>
Power	<ul style="list-style-type: none"> <li>* Use the supplied AC power cord to connect the AC power connector to an AC power outlet</li> <li>* Models have external power supply</li> </ul>





## Want to Buy?

---

Order Now

Get a Quote



Learn More about Hi-Network



Search our Resource Library



Follow us on LinkedIn



Contact for Sales or Support

## Contact **HI-NETWORK.COM** For Global Fast Shipping

---

HongKong Office Tel: +00852-66181601

HangZhou Office Tel: +0086-571-86729517

Email: [info@hi-network.com](mailto:info@hi-network.com)

Skype: echo.hinetwork

